



**TECHNICAL
BULLETIN- 0003**
DATE: 25-FEB-2016

MODIFIED TUNE INSTALLATION INSTRUCTIONS BRZ / FRS GT/GTS86 (2012-2015) NON-INTERCOOLED / INTERCOOLED SUPERCHARGER SYSTEM

SUMMARY:

Sprintex is continually seeking to ensure you have the best tuning device and tunes available for your vehicle. We wish to ensure that the handheld PnP tuner is loaded with up-to-date user menus and tunes, and that it fully supports your vehicle's stock calibration. The preliminary steps for your tuner device will help save installation time.

Please read these instructions fully, prior to installing the Sprintex supercharger system.

Sprintex supercharger system for the BRZ / FRS GT/GTS86 (2012-2015) requires a modified tune file which is vehicle specific and optimised for the application.

Approx. Turnaround time for receiving the modified tune from Sprintex is 48 hours.

General notes prior to installation of Sprintex supercharger system:

- Installing the modified tune before beginning installation of the supercharger system will ensure compatibility, with no last minute glitches and also provide Sprintex the time necessary to supply the modified tune.
- Please be aware that when changes are made to the calibration, it may take some time to take complete effect.
- In order to achieve the best outcome from these changes Sprintex requires that you start with a full tank of the highest grade of fuel you can purchase in your area, also that you allow the engine to reach its normal running temperature, before driving in a manner that achieves full boosted conditions during the first few trips.
- Loading a new calibration does not cancel out all of the adaptive learning, so the previously learned values will still be in play, to a reducing degree over the first few trips.

NOTE:

If you are unable to load a tune to the vehicle with the Sprintex PnP Tuner, please contact

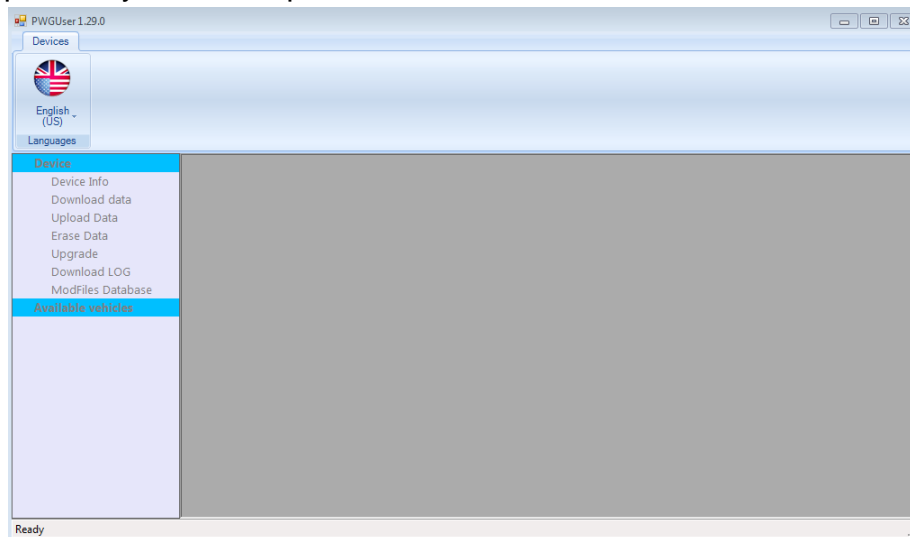
- a) **Sprintex USA** – info@sprintexusa.com / +1 855 591 2778
- b) **Sprintex Limited** – info@sprintex.com.au / +61 8 9262 7277

COMPLETE BEFORE SUPERCHARGER INSTALLATION!

1. Email Sprintex to obtain the PWGuser file or click on the following link to download <http://sprintexusa.com/wp-content/uploads/2015/08/PWGuser.zip>.
This program will be used to upload and download tunes to and from the Sprintex PnP Tuner.

Email id: info@sprintexusa.com or info@sprintex.com.au

2. Once you have received the file, please install and a new program named PWGUser should appear on your desktop.

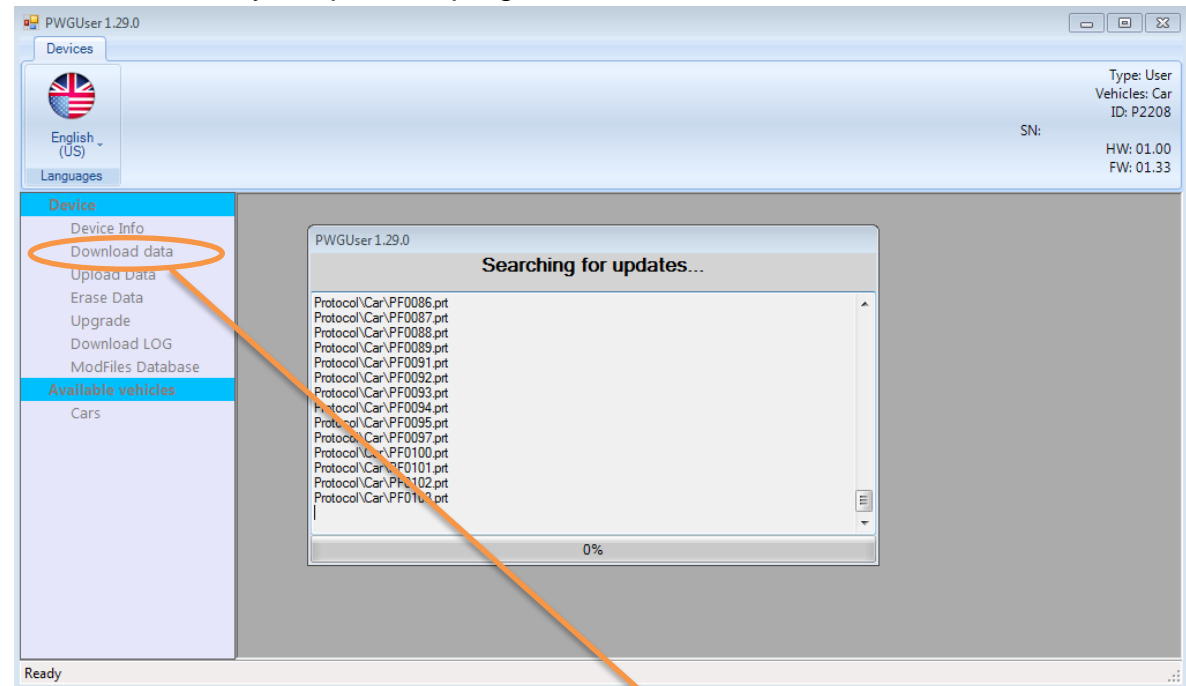


3. Proceed to your vehicle.
4. Locate the BRZ/FRS OBD-II port. This is under the dash and directly above the pedal assembly.
5. Plug the Sprintex OBD-II cable into the OBD-II port of the car.
6. Grab the opposite end of the OBD-II cable and plug into the Sprintex PnP Tuner.
7. Turn the key to "ON" position without starting your engine.
8. The Sprintex PnP Tuner will now attempt to recognize your vehicle by communicating with the ECM. Do not unplug the Tuner during this process.
9. Using your finger, tap the **TUNING** icon, follow directed steps and it will download the stock tune from the ECM.

10. Once the tuner has completed the download of the stock tune and the vehicle is OFF, proceed to your computer.
11. Open the PWGUser program that you installed earlier (Step 2).
12. Use the USB cable supplied to connect your Sprintex PnP Tuner to your computer.

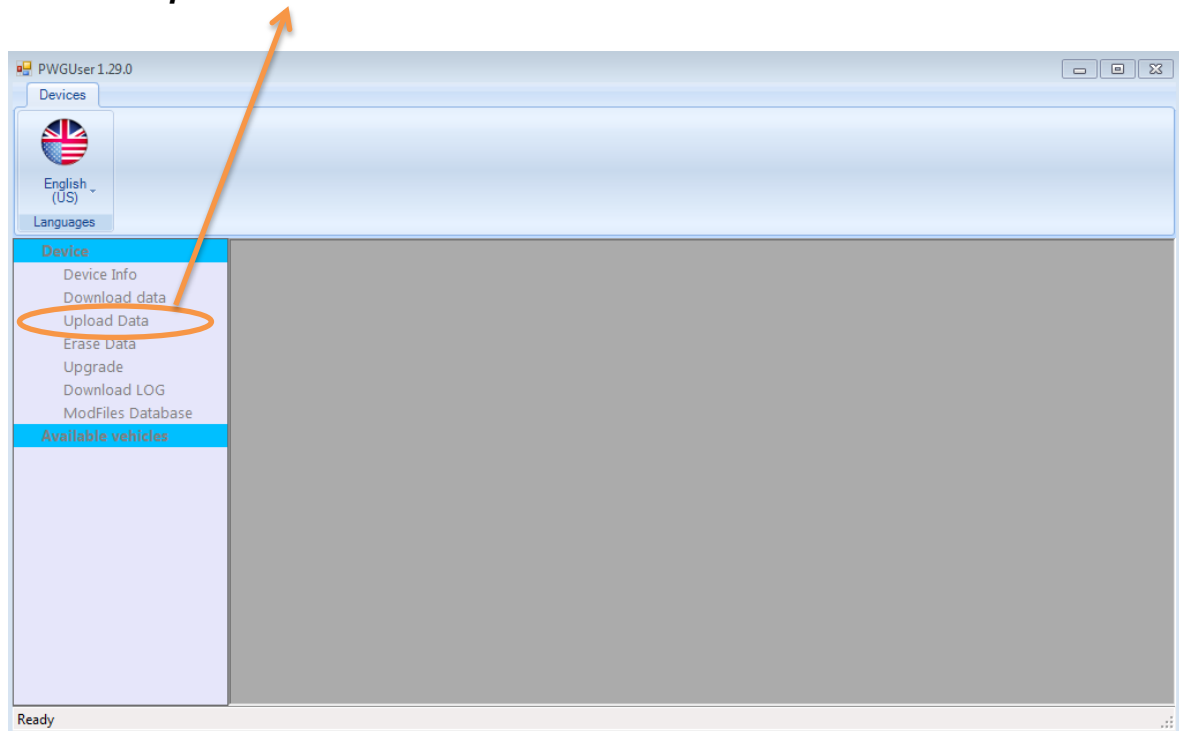


13. Now the program will auto update (PC needs to be connected to the internet), it will do this each time you open this program.



14. Once completed you will see a tab named **Download Data**. Click on this once.
15. Now hit the **Start button** near the center of the program to download your stock tune file.

16. A Pop-Up screen will open and ask you to choose a location to save the file, and name it. Save this file on your desktop with your first and last names (Ex: John Smith).
17. Next you will attach this stock tune file and send to the emails mentioned in Step 1.
18. Once we have sent you the new modified tune, copy this to your desktop.
19. Open the PWGUser Program and plug in your Sprintex PnP Tuner once again.
20. Select the **Upload Data tab** and then select Browse near the center of the window.



21. Select the new modified tune that you saved to your desktop.
22. A screen will pop up and ask you to confirm, select **YES**.
23. Once completed, exit the program and unplug your Sprintex PnP Tuner.
24. Return to your vehicle and plug the Sprintex PnP Tuner in.
25. Tap the **TUNING** icon, choose the new tune, confirm by clicking **YES**.
26. Tap **OK**, once KEY ON position has been made.



**TECHNICAL
BULLETIN- 0003
DATE: 25-FEB-2016**

27. Once writing has finished you will see a pop up that says **KEY OFF AND CONFIRM**. Turn the vehicle off and hit **OK** on the Sprintex PnP Tuner.
28. This will take you back to the main screen. Now click on **INFORMATION** and you will see **FILE IN ECU**. Under that title, the modified tune you wrote to the vehicle will be listed.

YOU ARE DONE!! Congratulations! GO MAKE BOOST!

WARNING:

Do not modify the Sprintex modified tune as this tune file has been fully optimised for the vehicle's application.

Modifying the Sprintex modified tune is not authorised by Sprintex and will not be covered under warranty.



CHECKLIST FOR REQUESTING MODIFIED TUNE:

Date:	
Customer name:	
Customer Email:	
Vehicle Make:	
Vehicle Model:	
Vehicle Year:	
Supercharger serial number:	
Kit serial number:	
Intercooled / Non-Intercooled:	
Files attached: Stock Tune file	
OTHER MODIFICATIONS	
Tyre size	
Axle ratio	
After market exhaust details	
After market air box details	
Suspension modification details	